

# Cypress

## FRAME

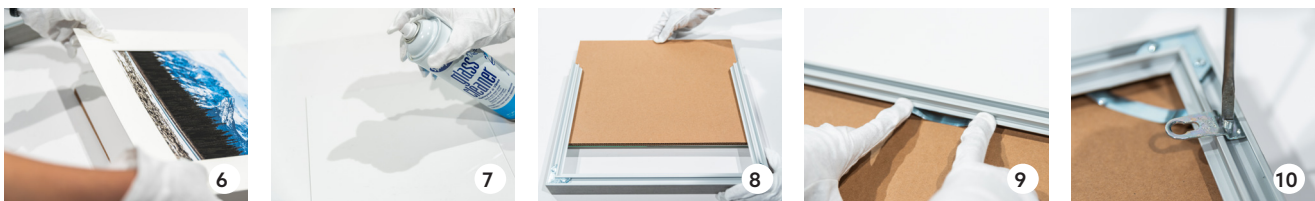
THE LOOK OF WOOD & STRENGTH OF METAL

The Cypress Frame offers an archivally-sound presentation for works of art on paper, panel, and board. Featuring white conservation matting and an elegant, neutral finish that not only follow current design trends, but will be timeless for years to come.



### Assembly Instructions:

1. Place frame face-down on a flat surface that will not damage or scratch the frame finish.
2. Using a screwdriver, remove spring clips by gently wedging head of screwdriver between the frame and the spring clip, and pivoting away from outer frame edge. Once partially out, manually remove the clip the rest of the way, and set aside. [Fig. 1]
3. Disassemble frame on one long side, by gently unscrewing the Tapped Corners at either corner until tension is loosened and side of frame easily pulls free. Do not remove screws entirely; set frame section and hardware aside. [Fig. 2 & 3]
4. With frame side removed, carefully slide out inner components (corrugated backing, back and front mat, and glazing... NOTE: glass edges are sharp!) [Fig. 4]
5. Separating the components, set glass and corrugated backing to one side and position work in desired placement on back mat, adhering the work to the back mat, and assembling the face and back mat together. [Fig. 5]
6. After cleaning glass (both sides), organize components back in their original order. Double check that there is no dust or debris between glass and mat face/artwork before reassembly. [Fig. 6 & 7]
7. Handling with care, load inner components into frame, following steps 3 & 2 (in this reverse order) noting that spring clips can be positioned manually [Fig. 9], without the use of a screwdriver. To ensure alignment and flush frame corners, it is recommended that you alternate tightening screws of Tapped Corners at either corner, until secure.
8. Attach Euro Hangers with a screwdriver, then attach picture wire, wipe down glass once more and you're ready to hang! [Fig. 10]



**Opus Art Supplies**  
opusartsupplies.com